



**CITIZENS
DEMAND
CLEAN AIR**

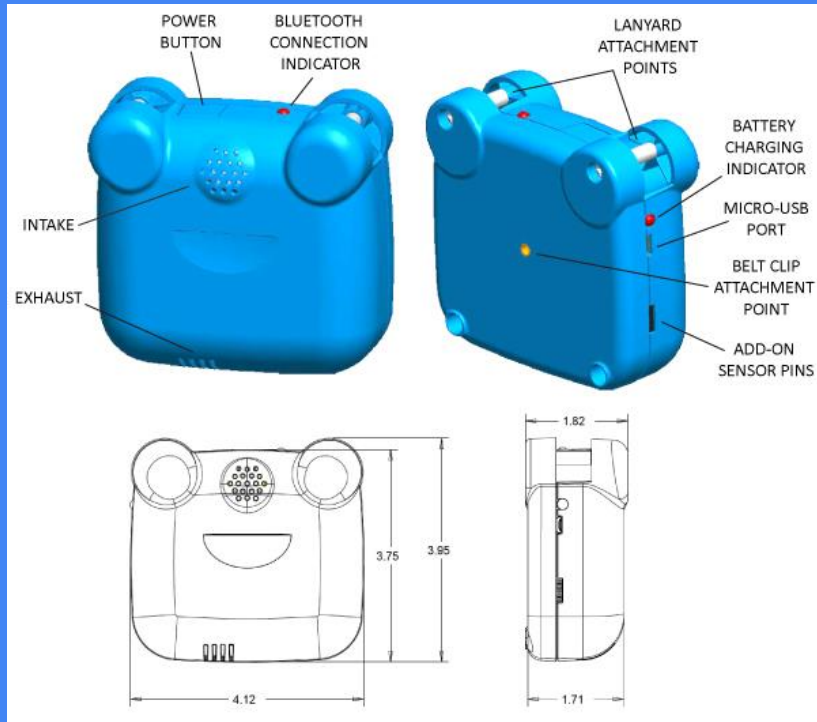
benchmarking: another opensource, crowdsourced,

Airbeam - Aircasting (USA)

citizen-science & advocacy project of habitatmap.org

→ Aircasting.org





THE AIRBEAM

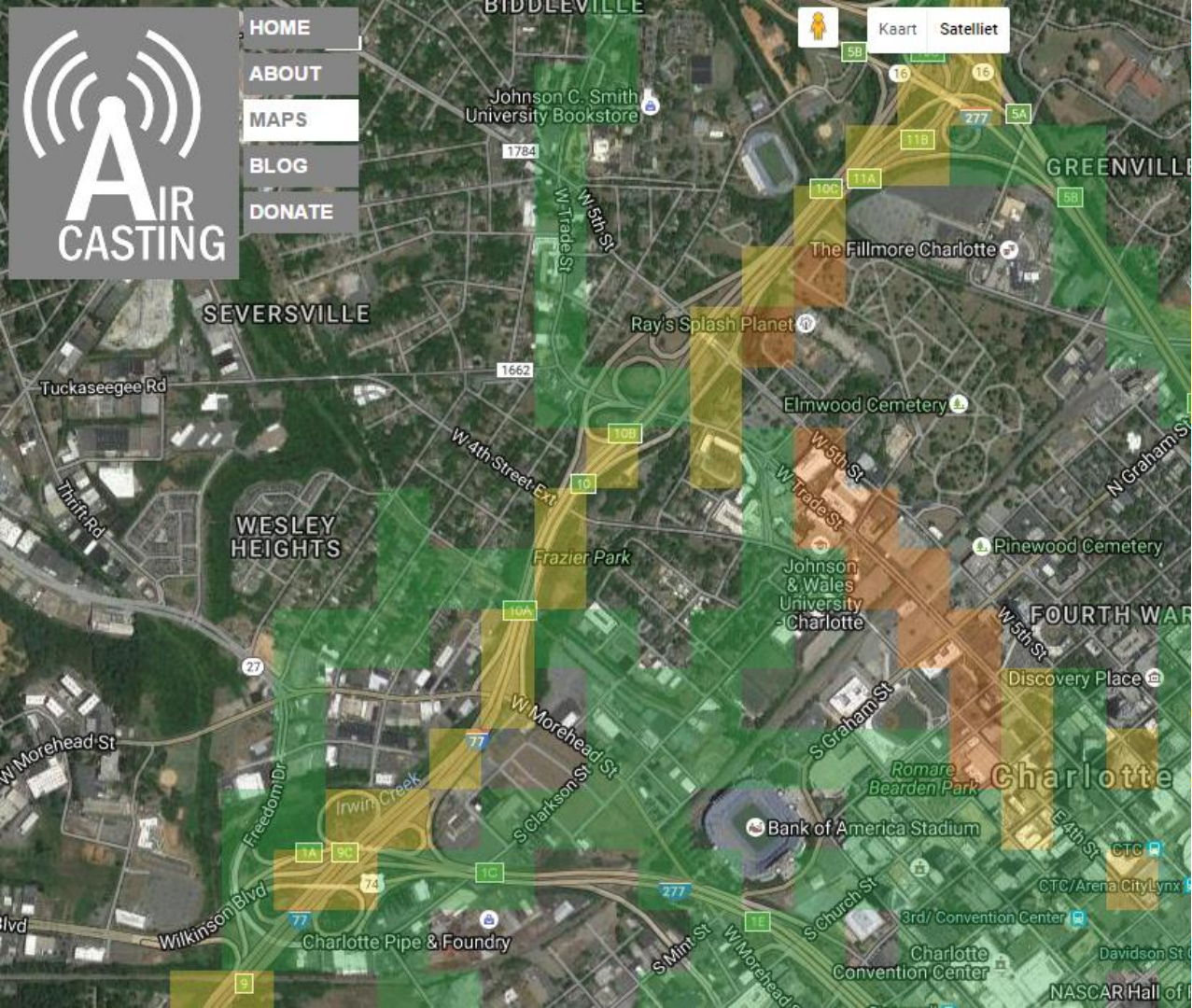
YOUR AIR QUALITY SENSOR



opensource device, server & API
 development funded by NGO's & funds
 designed for several meterings (NO, CO, PM 2.5)
 cheap production
 open reproducing



- HOME
- ABOUT
- MAPS
- BLOG
- DONATE



GRAPH	MAP
4941 CO Gas - bits CO-B4	112 Particulate Matter - tppcf DSM501A
17 Breathing Rate - bpm BioHarness3-BR	102 Heart Rate - bpm BioHarness3-HR
29 Humidity - % SHT15-H	112 Activity Level - VMU BioHarness3-AL

Avg HR: 71, Now HR: 58, Peak HR: 104

maps and graphs your air quality data in real time on your smartphone

02:09:45 | 02:17:30

Stop recording | Make Note | Dashboard

20 60 70 80 100 | Avg dB Peak dB: 70 88

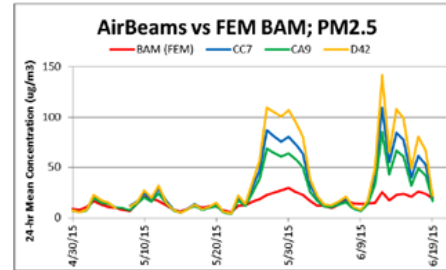
20 60 70 80 100 | Avg dB Peak dB: 54 84

Google | Edit | Share | CrowdMap | Dashboard

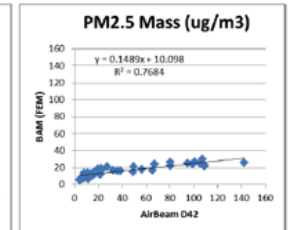
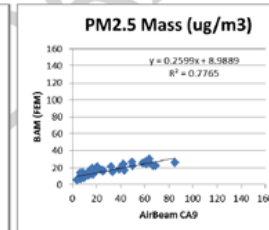
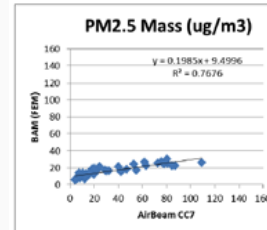
Aircasting System is now able to compile data provided by a scientific air station.



AirBeam Sensor vs FEM BAM (PM2.5; 24-hr mean)



- All PM measurements correlate very well with the corresponding FEM BAM data ($R^2 > 0.76$), but the three AirBeam sensors largely overestimate measured PM2.5 concentrations



Community work
and local advocacy
not only in New York.
About 1000 devices to date.
...most were reproduced



Clean Air
Carolina

Your advo

Who We Are Our Programs Join Us Take Action! Events

[Home](#) > [Air Pollution](#) > Citizen Scientists Map Uptown Charlotte on July 12!

Citizen Scientists Map Uptown Charlotte on July 12!

July 18, 2016 Posted by Terry Lansdell under Air Pollution, Air Toxics, Bicycle, Diesel, General, Health, NC Air Quality, Transit

Citizen science is a term that has been thrown around a lot recently, but what does it mean exactly? Technically, citizen science is **scientific work undertaken by members of the general public, often in collaboration with or under the direction of professional scientists and scientific institutions.** Often when we hear "citizen science" we forget these professional scientists, but the work they do is just as important as the data we coll



This relationship between scientists and citizens is especially important for monitoring air quality because scientists can use the data we collect to supplement data from the EPA's monitoring network.



savoirfaire savoir

