



Citizens at the Centre

**ClairCity's final conference on
citizen led air pollution and carbon
reductions**

**Atelier29, Rue Jacques de Lalaing 29, 1000 Brussels
Thursday, 19th March, 2020**



Our future with clean air
www.claircity.eu





Index

01. Programme

02. Session information

03. How to get here

04. The ClairCity process

Programme

09.30-10.10 Registration

10.10 Opening by the Chair

10.10-10.30 Air quality in Europe: Challenges and developments

10.30-11.00 Air quality, climate and health: Insights from medical science

11.00-11.30 The ClairCity process: Putting people at the centre of air quality and carbon management

11.30-11.50 Coffee break

11.50-12.30 Roundtable with cities

12.30-13.45 Lunch break and ClairCity stalls

13.45-14.00 Introduction to breakout sessions

14.00-15.00 Parallel sessions

Option A

Getting in touch with citizens with interactive tools

Option B

Innovative Modelling

Option C

Including citizens in policy-making: what does it bring?

15.00-15.20 Coffee break

15.20-16.00 Top-down or bottom up: the role of citizens in policy making

16.00-16.10 ClairCity prize giving

16.10-16.20 Final conclusions

16.20 Drinks reception



Morning sessions

Opening

Hans Bolscher (Trinomics), ClairCity Project Director

Air quality in Europe: Challenges and developments

European Commission, DG Environment, Policy Officer Clean Air Unit

Air quality, climate and health: Insights from medical science

Dr Dorota Jarosinska, WHO European Centre for Environment and Health, Bonn

The ClairCity process: Putting people at the centre of air quality and carbon management

Enda Hayes, UWE Bristol, ClairCity Technical Director

Roundtable with cities

ClairCity partners, chaired by Hans Bolscher

Round table with 4-6 cities, combined with statements and 'kahoot' voting.

Lunch break

Over lunch, explore ClairCity's innovative engagement tools and speak with the project team members about what worked and what did not.

Stalls will be displaying ClairCity skylines, the mobile game played by over 8,000 European citizens, GreenANT system and app for citizen-led air quality management, and our schools resources and activities.

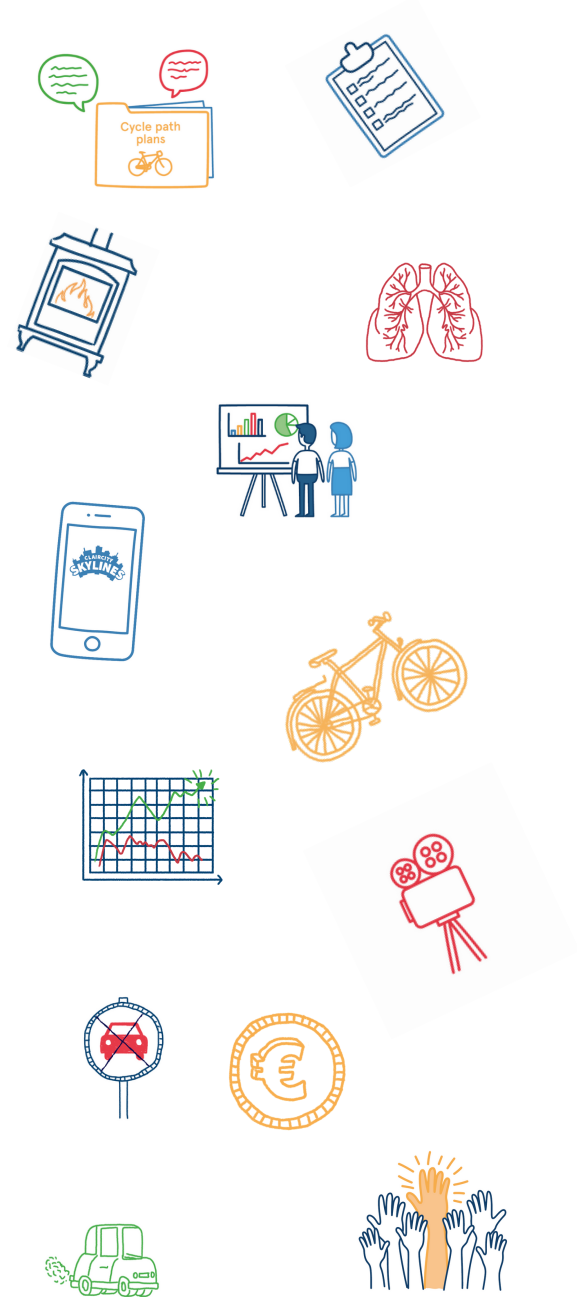
Afternoon sessions

Top-down or bottom up: the role of citizens in policy making

Gert Spaargaren (ClairCity External Advisory Board - CEAB), Roseanne Diab (CEAB), Tim Cassiers (BRAL), Dr Huw Brunt (Public Health Wales), more TBC. Chair: Jim Longhurst (UWE).

Prize giving

Presented by Arnoldas Milukas (Head of Unit, H2020 Environment and resources, EASME/European Commission)



Parallel sessions



Choose from one of the following:

Option A

Getting in touch with citizens with interactive tools

**Laura Fogg-Rogers (UWE), Eva Csobod (REC),
Andy King (UWE), TBC (NILU)**

The primary objective of the session is to evaluate the use of the specific innovative tools developed in the ClairCity project. These tools were aimed at actively engaging city citizens and stakeholders and developing an enhanced understanding of air quality, carbon emissions and their health impact in cities. The ClairCity tools have empowered citizens from different ages (including school children and older people) to better understand the specific challenges and opportunities that their city currently offers, as well as engaging them towards reducing emissions. Participants will get the opportunity to try out the 'serious game' ClairCity Skylines, school materials, the air pollution app GreenANTS, and view citizen videos.

Option B

Innovative modelling

**Kris Vanherle (Transport & Mobility
Leuven), Vera Rodrigues (University of
Aveiro)**

The session will dive into the methodological approach for the innovative modelling in ClairCity as well as

the rationale regarding how modelling fits in the project's overall activities: the citizen involvement, baseline development and screening of scenarios to produce results for a final scenario to 2030 and 2050. More specifically this session will cover: the full chain from activity modeling to emission estimates and air quality & health impact results; and the generalization of the approach and of key components in the generalized modelling tools (e.g. road transport emission estimates at link level) to show how the modelling in ClairCity can be applied in other cities.

Option C

Including citizens in air quality and carbon policy-making: what does it bring?

Stephan Slingerland (Trinomics)

This session will focus on the ClairCity results of making policies together with citizens. The main policy lessons achieved across our six cities will be discussed in the context of citizen involvement. A panel of cities will reflect with delegates about the opportunities and costs for policymaking and policy implementation following greater citizen participation. Finally, the session will discuss what policy lessons the ClairCity method can offer to other middle-sized cities aiming at ambitious and citizen-inclusive air quality and carbon policies.



How to get here

To brussels

Train

Brussels Midi (Gare du Midi) is the main station in Brussels. Unless otherwise stated all trains leave from there, including Eurostar. Visit seat61.com and search for Brussels to explore your options.

Bus

Brussels is well-connected by Europe's bus companies. Flixbus offers coaches to Brussels from as little as £1 if booked in advance. Most budget companies arrive at Brussels North Station, 2 km from Grand Place (centre). Check your company's website to see where you arrive.

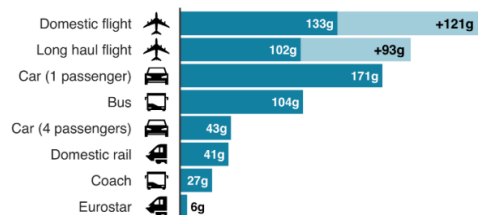
From the airport

We discourage flying, as it produces more CO₂ emissions than any other travel mode. However, we understand that for some people it is the only option. If you do fly, you can catch the train (€12.70 one way, 17 minutes) or the bus (€3 one way, 30 minutes) to the centre.

Emissions from different modes of transport

Emissions per passenger per km travelled

■ CO₂ emissions ■ Secondary effects from high altitude, non-CO₂ emissions



Note: Car refers to average diesel car

Source: BEIS/Defra Greenhouse Gas Conversion Factors 2019



To the venue

The venue is located in central Brussels, on [Rue Jacques de Lalaing 29](#)

Metro

Several metro stations are located close to Artelier29: Trône, Arts-Loi, Maelbeek and Schuman. From **Arts-Loi**, head East along Rue de la Loi. Take the forth right onto Rue de la Science and first left onto Rue Jaques de Lalaing. The venue is 300 m ahead, on your right. From **Maelbeek** and **Schuman**, head West along Rue de la loi, take a left onto Rue de Trèves and first left onto Rue Jaques de Lalaing. The venue is 50 m ahead, on your right. See Bus for directions from **Trône**.

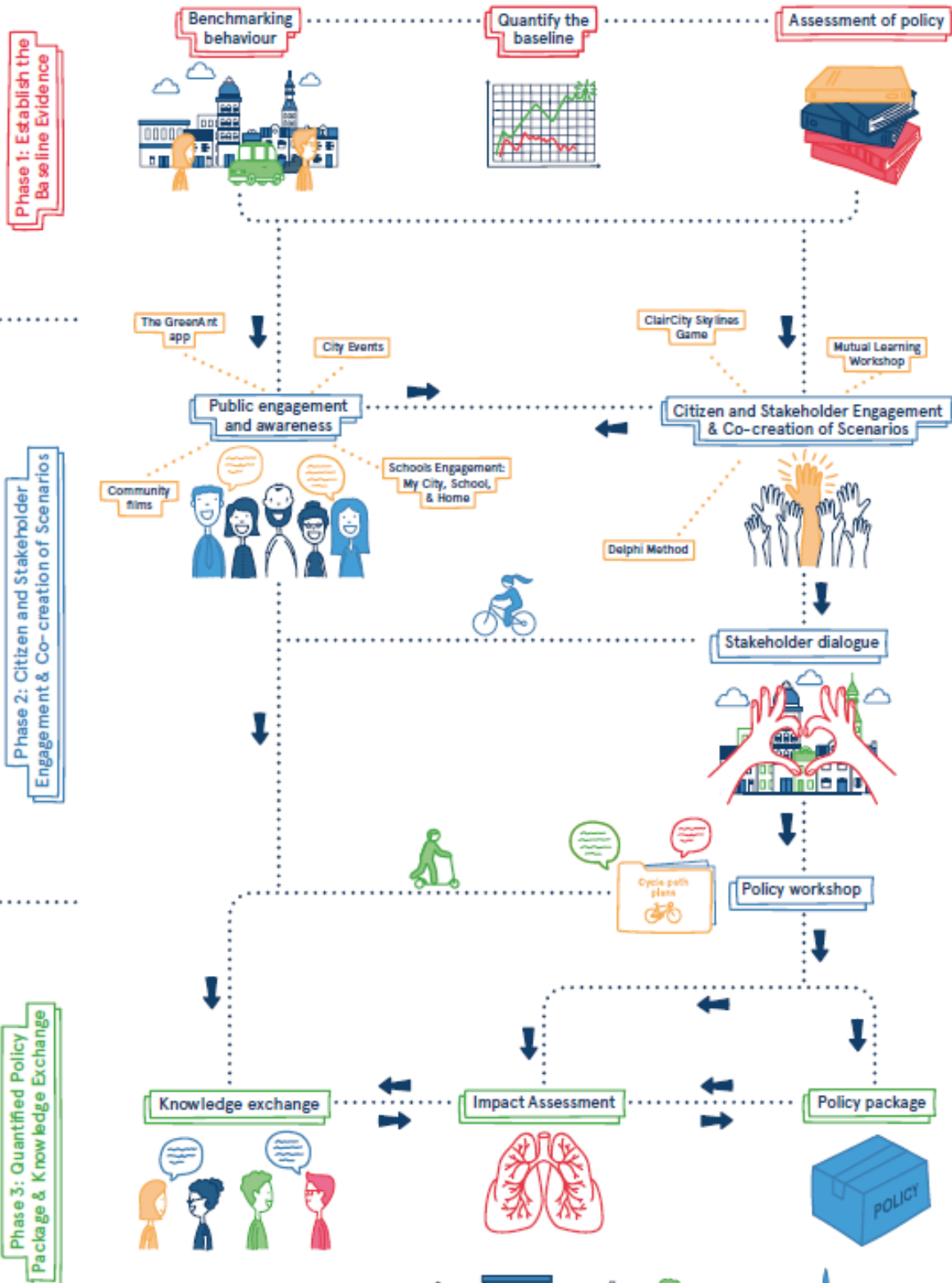
Bus

From Gare du Midi take the 2 or 6 to Trône. Take the first right on Rue Montoyer, fifth left on Rue d'Arlon and second right onto Rue Jaques de Lalaing. The venue is 150m ahead, on your right.

Walking

From the central train station (Gare Central), head East on Rue Baron Horta. Walk through Parc de Bruxelles and continue straight, crossing over the Metro line onto Rue Belliard. Turn left on Rue d'Arlon and take the first right onto Rue Jaques de Lalaing, where you will see Atelier up ahead on your right.

How the ClairCity process engages with a city & its citizens



Towards a clean air, low carbon healthy future city
www.claircity.eu





For a future with clean air...

For non-ClairCity people, register here: <https://gecko.fm/bjakx>

Internal members register here: <https://gecko.fm/xizng>

More information: claircity.eu/blog/citizens-at-the-centre

Enquiries: irati.artola@trinomics.eu



Our future with clean air
www.claircity.eu

